



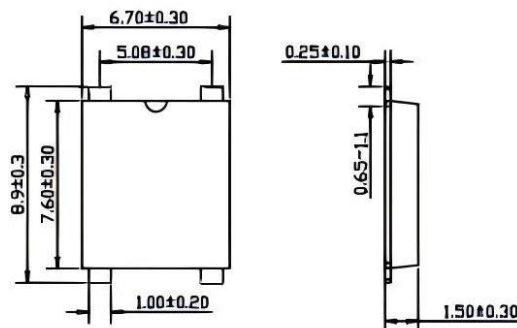
MSB40B~MSB40M

Single Phase 4.0Amp Glass passivated Bridge Rectifiers

Features

- ◆ The plastic package carries Underwriters Laboratory Flammability Classification 94V-0
- ◆ Idea for printed circuit board
- ◆ Glass passivated junction chip
- ◆ Low reverse leakage
- ◆ High forward surge current capability
- ◆ High temperature soldering guaranteed
260°C/10 seconds at terminals

MSB Package



Mechanical Data

Case : Molded plastic body

Terminals : Solder plated, solderable per MIL-STD-750, Method 2026

Polarity : Polarity symbol marking on body

Mounting Position : Any



Dimensions in millimeters

Maximum Ratings And Electrical Characteristics

Ratings at 25°C ambient temperature unless otherwise specified. Single phase half-wave 60Hz, resistive or inductive load, for capacitive load current derate by 20%.

Parameter	SYMBOLS	MSB40B	MSB40D	MSB40G	MSB40J	MSB40K	MSB40M	UNITS
Maximum repetitive peak reverse voltage	V_{RRM}	100	200	400	600	800	1000	V
Maximum RMS voltage	V_{RMS}	70	140	280	420	560	700	V
Maximum DC blocking voltage	V_{DC}	100	200	400	600	800	1000	V
Maximum average forward rectified current at $T_L=100^\circ\text{C}$	$I_{(AV)}$	4.0						A
Peak forward surge current, 8.3ms single half sine-wave superimposed on rated load	I_{FSM}	150.0						A
Rating for fusing ($t=8.3\text{ms}$, $T_a=25^\circ\text{C}$)	I_t^2	93.375						A_s^2
Maximum instantaneous forward voltage at 4.0A	V_F	1.0						V
Maximum DC reverse current $T_A=25^\circ\text{C}$ at rated DC blocking voltage $T_A=125^\circ\text{C}$	I_R	2.0 200						μA
Typical junction capacitance (Note 1)	C_J	46						pF
Typical thermal resistance	R_{QA}	55						$^\circ\text{C/W}$
Operating junction and storage temperature range	T_J, T_{STG}	-55 to +150						$^\circ\text{C}$

Note: 1. Measured at 1MHz and applied reverse voltage of 4.0V D.C.



MSB40B~MSB40M

Single Phase 4.0Amp Glass passivated Bridge Rectifiers

Ratings And Characteristic Curves

FIG. 1- DERATING CURVE OUTPUT RECTIFIED CURRENT

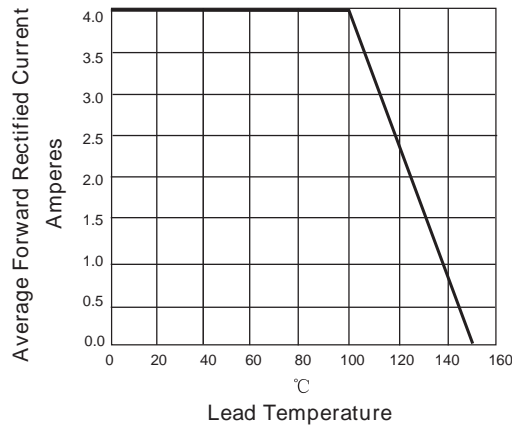


FIG. 2-MAXIMUM NON-REPETITIVE PEAK FORWARD SURGE CURRENT PER LEG

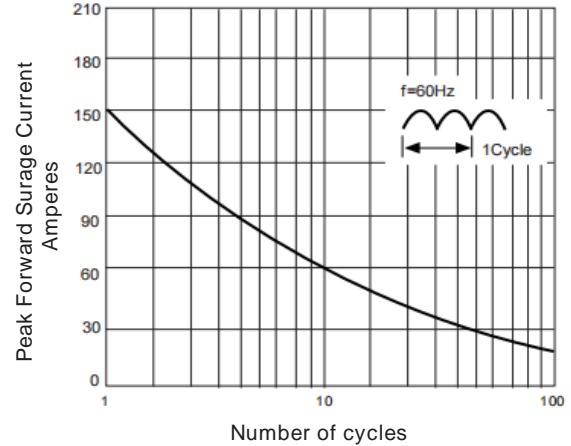


FIG. 3-TYPICAL FORWARD VOLTAGE CHARACTERISTICS

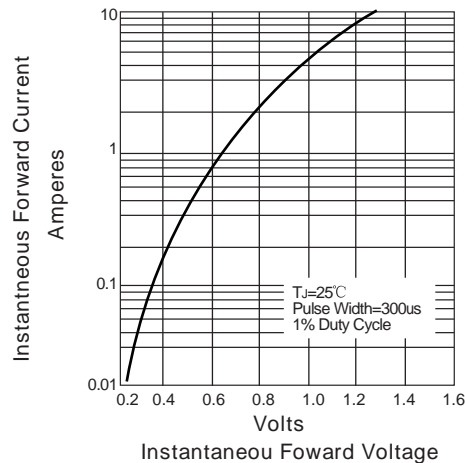
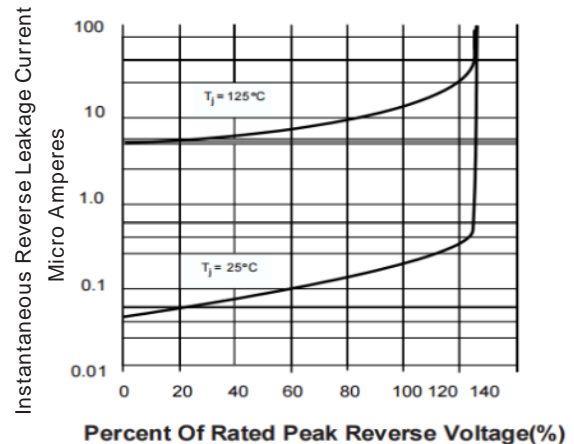
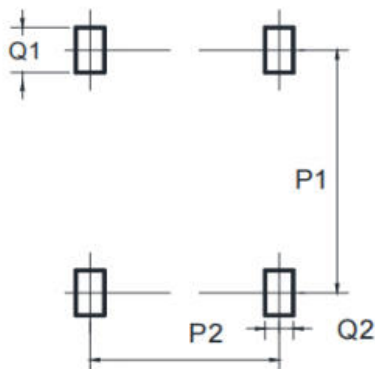


FIG. 4-TYPICAL REVERSE LEAKAGE CHARACTERISTICS



MSB Suggested Pad Layout



Dimensions is millimeters

UNIT		P1	P2	Q1	Q2
mm	min	8.30	5.10	1.6	1.2
mil	min	326.77	200.79	63.0	47.25



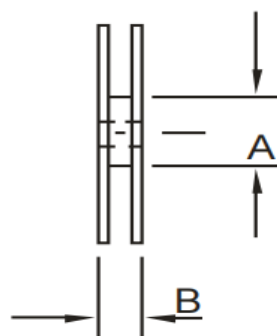
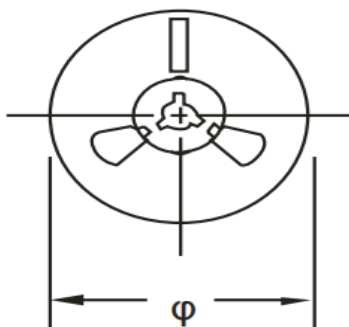
MSB40B~MSB40M

Single Phase 4.0Amp Glass passivated Bridge Rectifiers

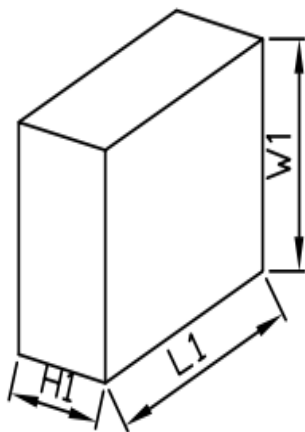


Packaging Information

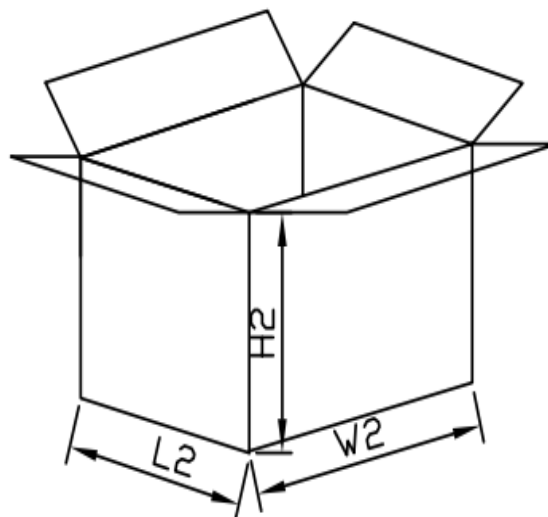
1. Reel Dimensions



2. Inside Box



3. Outside Box





MSB40B~MSB40M

Single Phase 4.0Amp Glass passivated Bridge Rectifiers

Packaging Information

NO	UNIT	Reel Dimensions			Inside Box			Outside Box		
Size	mm	φ	A	B	L1	W1	H1	L2	W2	H2
		330	100	15	340	340	46	360	360	270
QTY	PCS	Smallest package,3000PCS/reel			6,000PCS,2 reel in total			30,000PCS/carton,5boxes in total		
Note	Tolerance ≤20mm,±3mm; 21-100mm,±5mm; 101-500mm,±10mm									